



OVERBURDENED COMMUNITIES WITHIN THE PINELANDS

Pinelands Commission
Policy & Implementation Committee

11/19/2021

State Environmental Justice (EJ) Activities

EO 23 – addressing EJ in NJ urban communities (4/20/2018)

- Continued mandate for EJ Advisory Council
- Called on DEP to develop guidance for executive branch agencies
 - Guidance document issued 6/29/2020

New Jersey Environmental Justice Law (6/18/2018)

- Requires the DEP to evaluate the environmental and public health impacts of certain **facilities** on **overburdened communities** when reviewing certain permit applications.
- DEP currently engaged in rule-making process

Overburdened Communities (OBCs)

The EJ law defines an **overburdened community** as any **census block group**, as determined in accordance with the most recent United States Census, in which:

1. at least 35 percent of the households qualify as low-income households (at or below twice the poverty threshold as determined by the United States Census Bureau);
2. at least 40 percent of the residents identify as minority or as members of a State recognized tribal community; or,
3. at least 40 percent of the households have limited English proficiency (without an adult that speaks English “very well” according to the United States Census Bureau)

Facilities

The EJ law requires the DEP to evaluate the environmental and public health impacts of the following facilities on OBCs when reviewing specific types of permit applications:

1. Major sources of air pollution (i.e., gas fired power plants and cogeneration facilities)
2. Resource recovery facilities or incinerators; sludge processing facilities
3. Sewage treatment plants with a capacity of more than 50 million gallons per day
4. Transfer stations or solid waste facilities
5. Recycling facilities that receive at least 100 tons of recyclable material per day
6. Scrap metal facilities
7. Landfills
8. Medical waste incinerators, except those attendant to hospitals and universities.

Overburdened Communities (OBC)

Under the Environmental Justice Law

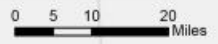
Data from 5 Year American Community Survey (2015 to 2019)

| Category of OBCs* | Number of Block Groups | Number of People |
|---|------------------------|------------------|
| Minority | 1,670 | 2,405,859 |
| Low Income & Minority | 1,165 | 1,637,572 |
| Low Income | 197 | 274,412 |
| Low Income, Minority, & Limited English | 122 | 185,828 |
| Minority & Limited English | 12 | 11,972 |
| Low Income & Limited English | 2 | 2,574 |
| TOTAL | 3,168 | 4,518,217 |

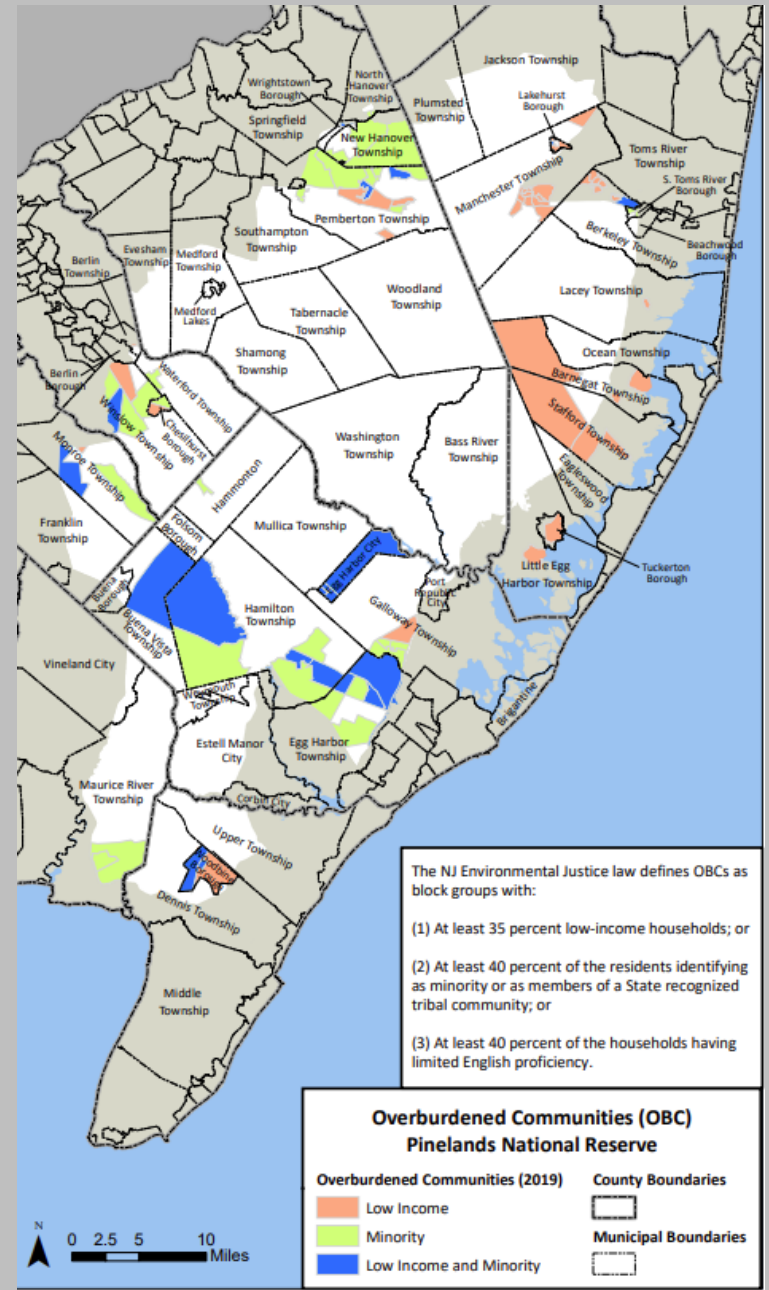
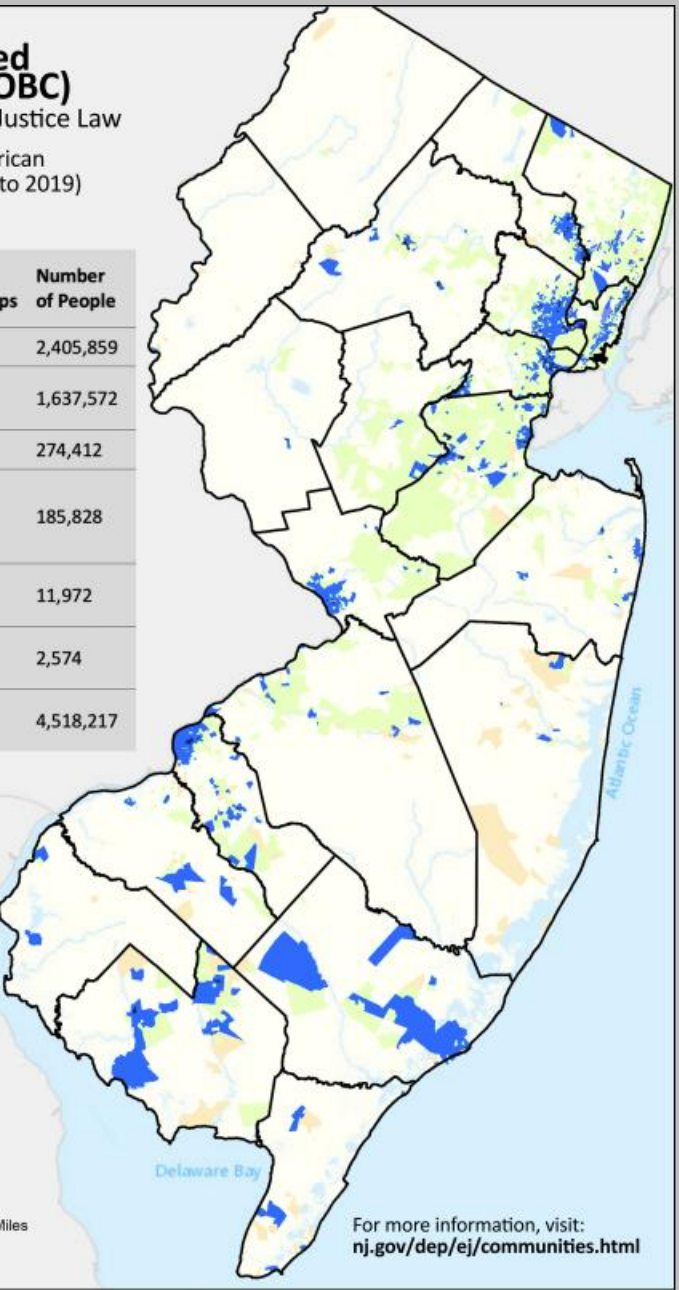
Counties

*The Environmental Justice law defines OBCs as block groups with:

- (1) At least 35 percent low-income households; or
- (2) At least 40 percent of the residents identify as minority or as members of a State recognized tribal community; or
- (3) At least 40 percent of the households have limited English proficiency



For more information, visit: nj.gov/dep/ej/communities.html

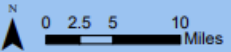


The NJ Environmental Justice law defines OBCs as block groups with:

- (1) At least 35 percent low-income households; or
- (2) At least 40 percent of the residents identifying as minority or as members of a State recognized tribal community; or
- (3) At least 40 percent of the households having limited English proficiency.

Overburdened Communities (OBC) Pinelands National Reserve

| | |
|---------------------------------|----------------------|
| Overburdened Communities (2019) | County Boundaries |
| Low Income | County Boundaries |
| Minority | Municipal Boundaries |
| Low Income and Minority | Municipal Boundaries |



Notes on the Maps

- The spatial unit of measurement used in determining an OBC is the census block group (generally between 600 and 3,000 people)
- The available DEP dataset identified OBCs based on the Census Bureau's 5-year ACS (2015-2019)
- The list of OBC categories on the Pinelands Commission's map legend is slightly different than the DEP's OBC map because there were no OBCs identified within the Pinelands or PNR on the basis of the limited English proficiency criteria of the law. Therefore, three less OBC categories were listed in our map legend.

OBC Acres by Pinelands Management Area

| | PAD | FA | APA | RDA | PV | PT | RGA | M/F | Total |
|----------------------------|-------|--------|-------|--------|-------|--------|--------|--------|---------|
| Pinelands Area | 9,000 | 52,061 | 5,238 | 20,048 | 2,543 | 8,375 | 32,686 | 20,219 | 150,170 |
| Pinelands National Reserve | - | 3,337 | - | 622 | - | 2,896 | 4,644 | - | 11,499 |
| Total | 9,000 | 55,398 | 5,238 | 20,670 | 2,543 | 11,271 | 37,330 | 20,219 | 161,688 |



Questions?